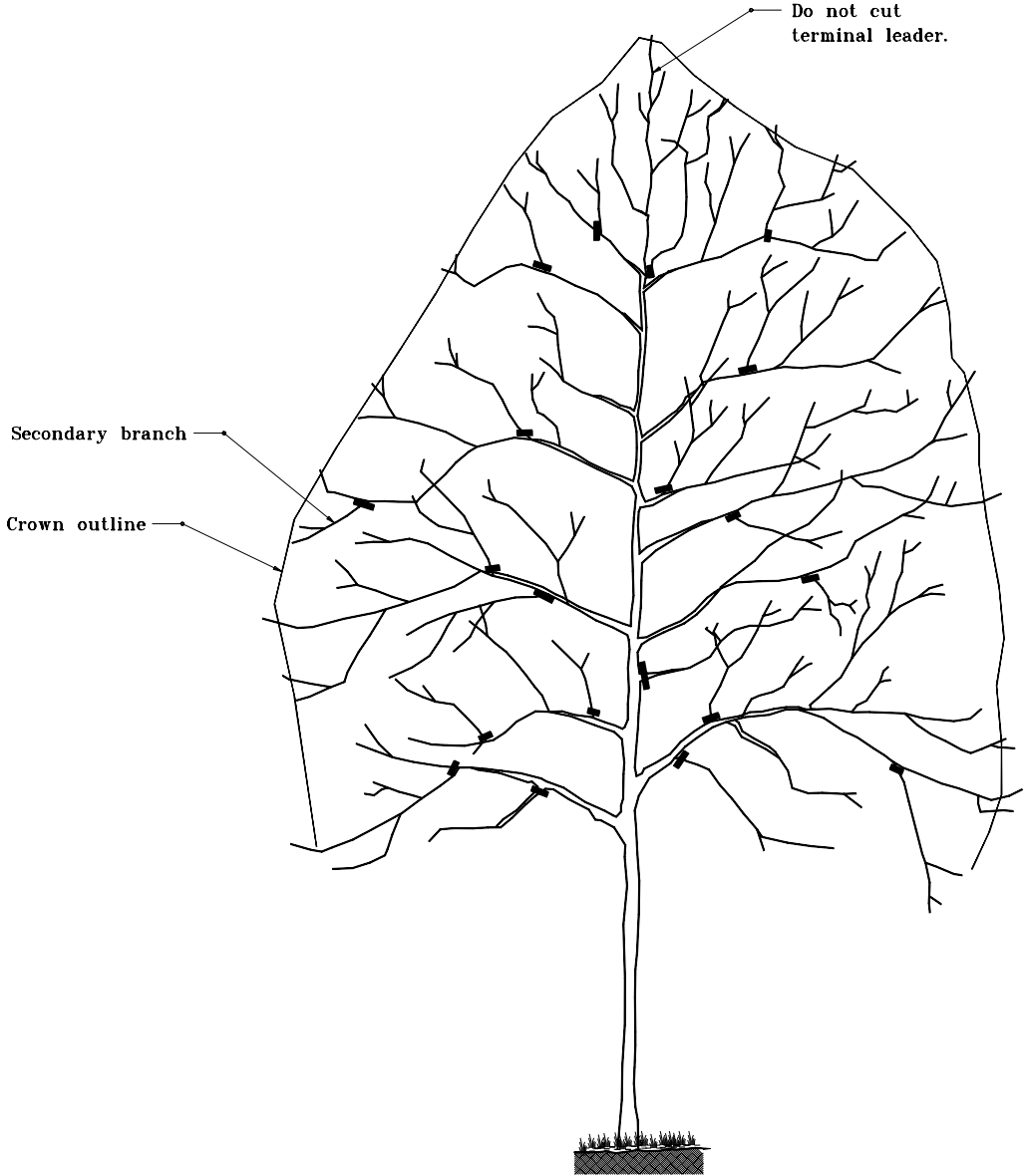


GENERAL NOTES

1. Pruning cuts shall be made as close as possible to remaining branch and in direction of symbol for cuts (■).
2. Cut back secondary branching to reduce foliage by a minimum of 1/3 to a maximum of 1/2.

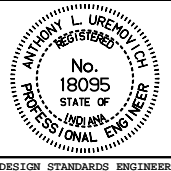


INDIANA DEPARTMENT OF TRANSPORTATION

**TREE PRUNING
TALL SHADE TREE**

APRIL 1995

STANDARD DRAWING NO. E 622-LSPR-01



DETAILS PLACED IN THIS FORMAT 11-15-99

/s/ Anthony L. Uremovich 11-15-99
DESIGN STANDARDS ENGINEER DATE

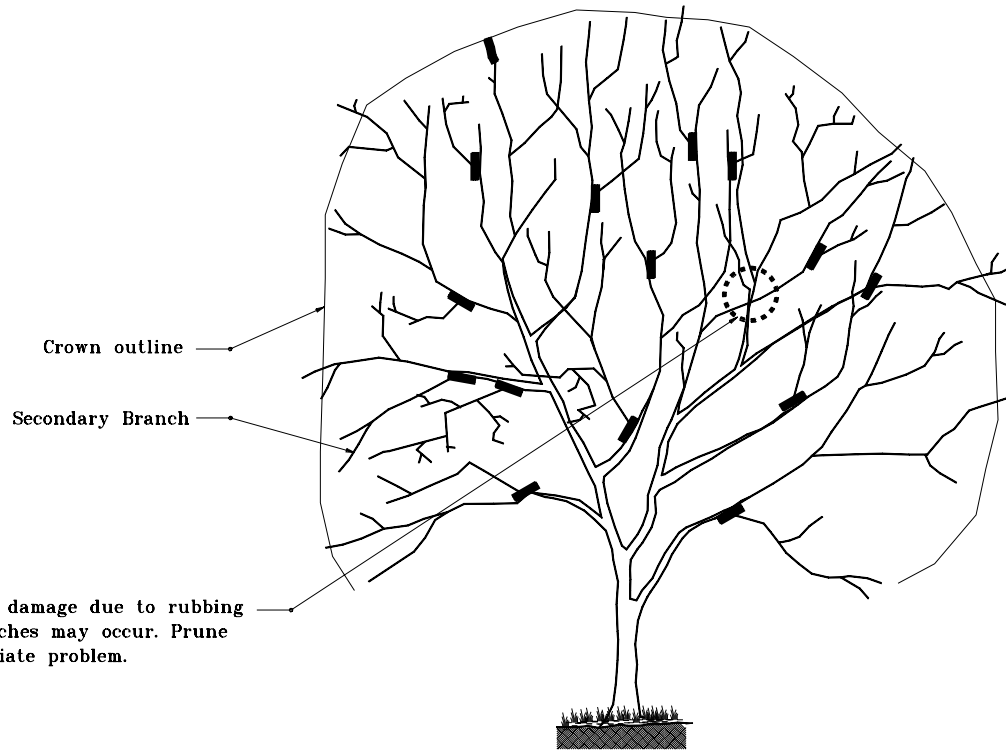
/s/ Firooz Zandi 11-15-99
CHIEF HIGHWAY ENGINEER DATE

DESIGN STANDARDS ENGINEER

ORIGINALLY APPROVED 4-01-95

GENERAL NOTES

1. Pruning cuts shall be made as close as possible to remaining branch and in direction of symbol for cuts (■).
2. Cut back secondary branching to reduce foliage by a minimum of 1/3 to a maximum of 1/2.



INDIANA DEPARTMENT OF TRANSPORTATION

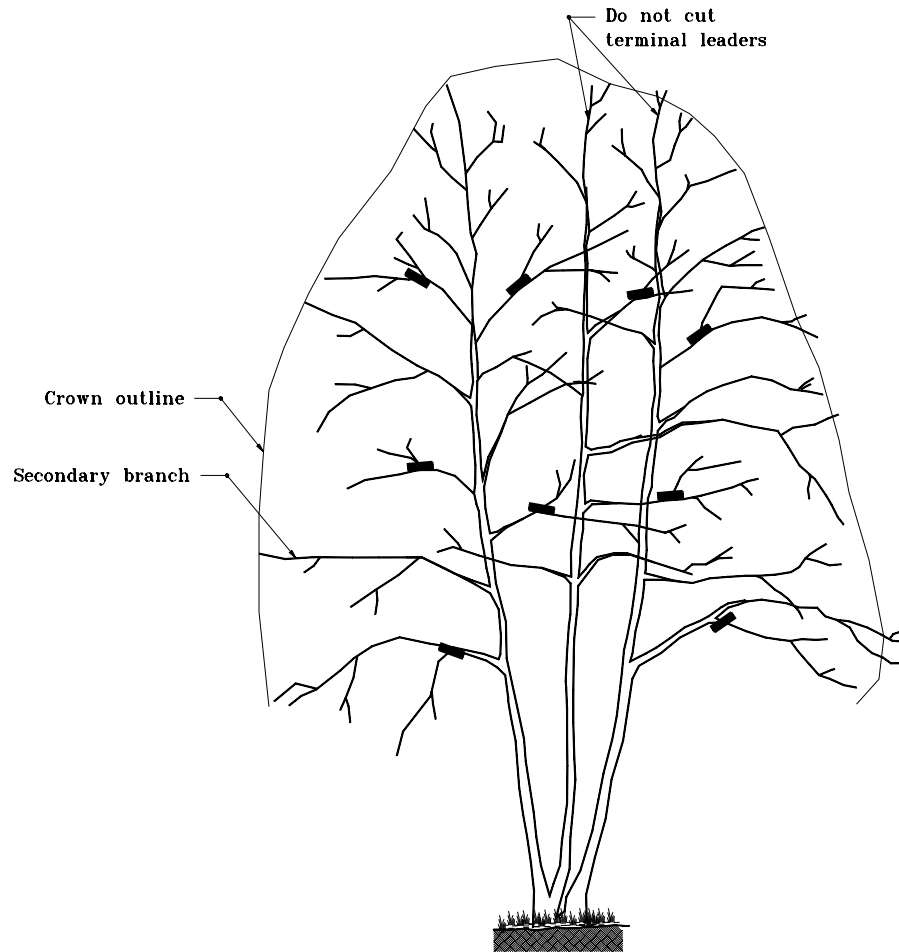
**TREE PRUNING
INTERMEDIATE TREE-ONE STEM**
APRIL 1995

STANDARD DRAWING NO. **E 622-LSPR-02**

	DETAILS PLACED IN THIS FORMAT	11-15-99
	/s/ Anthony L. Uremovich	11-15-99
	DESIGN STANDARDS ENGINEER	DATE
	/s/ Firooz Zandi	11-15-99
	CHIEF HIGHWAY ENGINEER	DATE
DESIGN STANDARDS ENGINEER	ORIGINALLY APPROVED	4-01-95

GENERAL NOTES

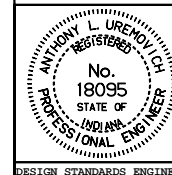
1. Pruning cuts shall be made as close as possible to remaining branch and in direction of symbol for cuts (■).
2. Cut back secondary branching to reduce foliage by a minimum of 1/3 to a maximum of 1/2



INDIANA DEPARTMENT OF TRANSPORTATION

TREE PRUNING
INTERMED. TREE-MULT. STEM
 APRIL 1995

STANDARD DRAWING NO. **E 622-LSPR-03**



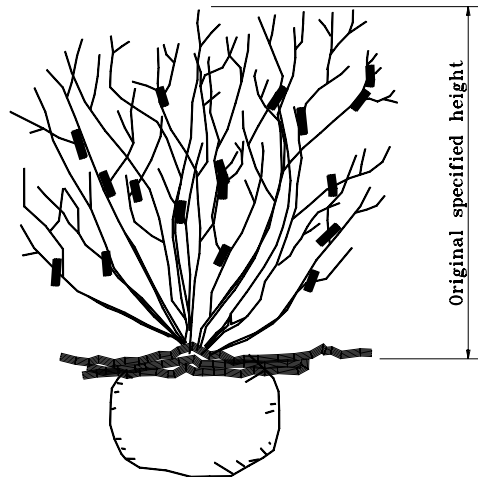
DETAILS PLACED IN THIS FORMAT 11-15-99
 /s/ Anthony L. Uremovich 11-15-99
 DESIGN STANDARDS ENGINEER DATE

/s/ Firooz Zandi 11-15-99
 CHIEF HIGHWAY ENGINEER DATE
 ORIGINALLY APPROVED 4-01-95

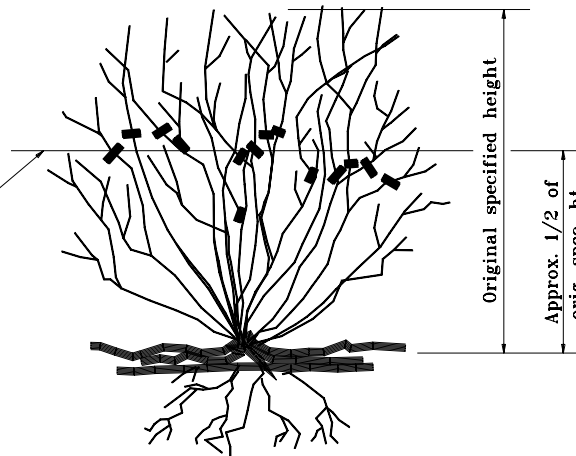
DESIGN STANDARDS ENGINEER

GENERAL NOTES

1. Pruning operations for balled & burlapped stock shall maintain the natural shape and characteristic branching pattern.
2. Cut back secondary branching to reduce foliage by a minimum of 1/3 to a maximum of 1/2.
3. Budding variations and different growth characteristic of the various shrub species may alter pruning procedures. See suggested procedure on Standard Drawing E 622-LSPR-05 which applies to most shrub species.



BALLED & BURLAPPED SHRUB



Line designating approx.
1/2 of original height.

BARE ROOT SHRUB

INDIANA DEPARTMENT OF TRANSPORTATION

SHRUB PRUNING

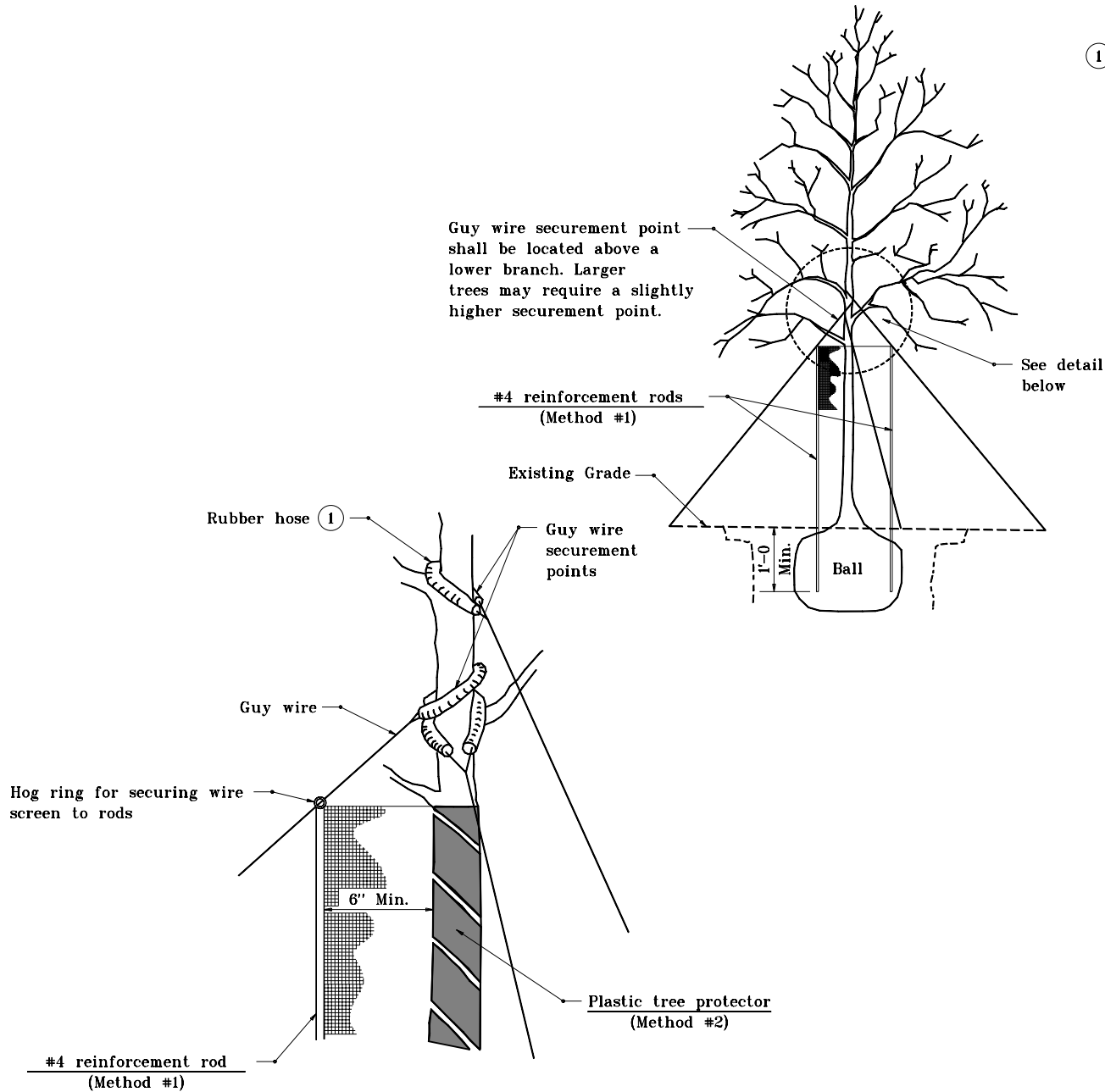
APRIL 1995

STANDARD DRAWING NO. **E 622-LSPR-04**

	DETAILS PLACED IN THIS FORMAT	11-15-99
	/s/ Anthony L. Uremovich	11-15-99
	DESIGN STANDARDS ENGINEER	DATE
/s/ Firooz Zandi	11-15-99	
CHIEF HIGHWAY ENGINEER	DATE	
DESIGN STANDARDS ENGINEER	ORIGINALLY APPROVED	4-01-95

GENERAL NOTES

- ① See Standard Drawing E 622-LSPL-04 for Rubber Hose Detail.



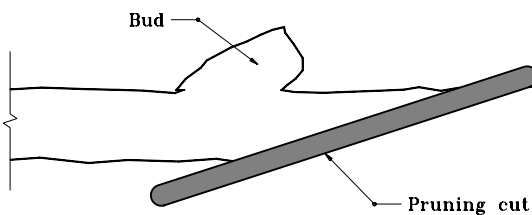
DETAIL APPLIES TO TREES 1 1/4" CALIPER AND GREATER

INDIANA DEPARTMENT OF TRANSPORTATION	
TREE PROTECTION	
APRIL 1995	
STANDARD DRAWING NO. E 622-LSPR-05	
	DETAILS PLACED IN THIS FORMAT 11-15-99 /s/ Anthony L. Uremovich 11-15-99 DESIGN STANDARDS ENGINEER DATE
DESIGN STANDARDS ENGINEER	/s/ Firooz Zandi 11-15-99 CHIEF HIGHWAY ENGINEER DATE ORIGINALLY APPROVED 4-01-95

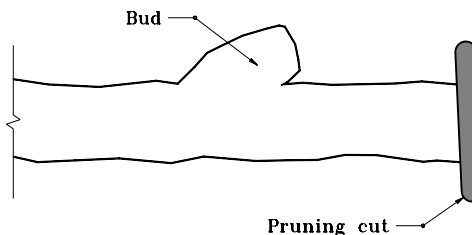
GENERAL NOTES

- ① Cut at bud starts opposite the base of bud and slants up toward top of bud.
- ② Cut at secondary branch shall be parallel to remaining branch.

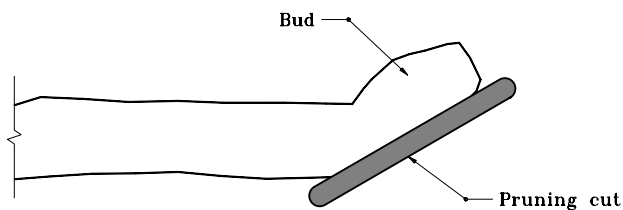
Improper Cut
Pruning cut too slanting (too much heartwood is exposed). Die-back will occur.



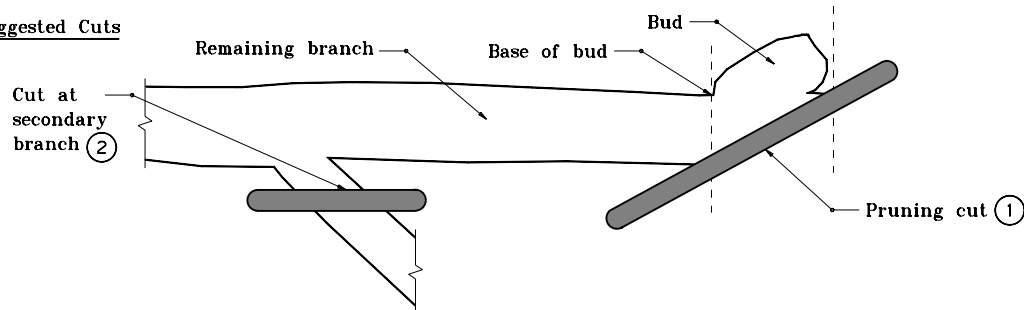
Improper Cut
Pruning cut too far beyond bud. Die-back will occur.



Improper Cut
Pruning cut too close to bud (will interfere with bud growth).



Suggested Cuts

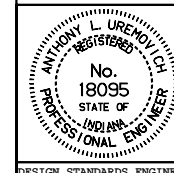


INDIANA DEPARTMENT OF TRANSPORTATION

**PRUNING PROCEDURE
TREES AND SHRUBS**

APRIL 1995

STANDARD DRAWING NO. **E 622-LSPR-06**



DETAILS PLACED IN THIS FORMAT 11-15-99

/s/ Anthony L. Uremovich 11-15-99
DESIGN STANDARDS ENGINEER DATE

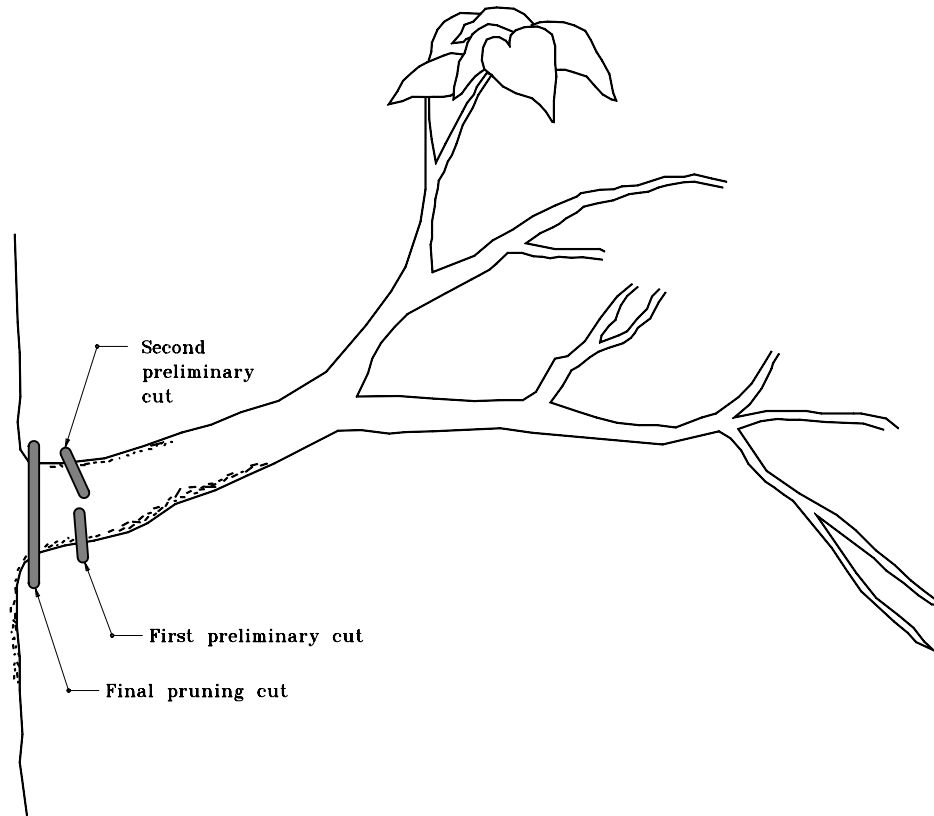
/s/ Firooz Zandi 11-15-99
CHIEF HIGHWAY ENGINEER DATE

DESIGN STANDARDS ENGINEER

ORIGINALLY APPROVED 4-01-95

GENERAL NOTES

1. This is a suggested method for pruning heavier limbs. If these limbs are not properly cut, damage to adjacent portions of the tree may occur.

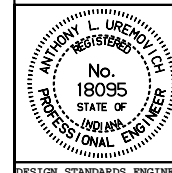


INDIANA DEPARTMENT OF TRANSPORTATION

**PRUNING PROCEDURE
HEAVIER LIMBS**

APRIL 1995

STANDARD DRAWING NO. **E 622-LSPR-07**



DETAILS PLACED IN THIS FORMAT 11-15-99

/s/ Anthony L. Uremovich 11-15-99
DESIGN STANDARDS ENGINEER DATE

/s/ Firooz Zandi 11-15-99
CHIEF HIGHWAY ENGINEER DATE

DESIGN STANDARDS ENGINEER

ORIGINALLY APPROVED 4-01-95